



# Consumer Information

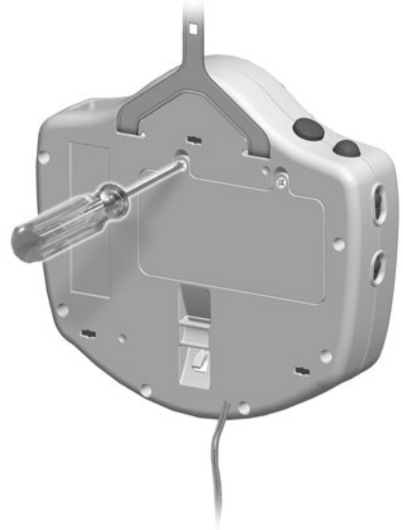
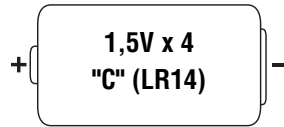
## WARNING

### Prevent Entanglement Injury

- This product may not attach to all crib/cot designs. Do not add additional strings or straps to attach to a “crib/cot” or playpen.
  - Use **ONLY** attached to a crib/cot or playpen.
- 
- Please keep this instruction sheet for future reference, as it contains important information.
  - This product includes four “AA” batteries in a disposable box. Batteries included are for demonstration purposes only. Before first time use, remove the “AA” batteries in the disposable box and throw them away.
  - Requires four “C” (LR14) **alkaline** batteries and two “AAA” (LR03) **alkaline** batteries for operation (batteries not included).
  - Adult assembly is required for battery installation and crib/cot attachment.
  - Tool required for battery installation: Phillips screwdriver (not included).
  - This product contains magnets. Do not use around items that are sensitive to or affected by magnetic fields.

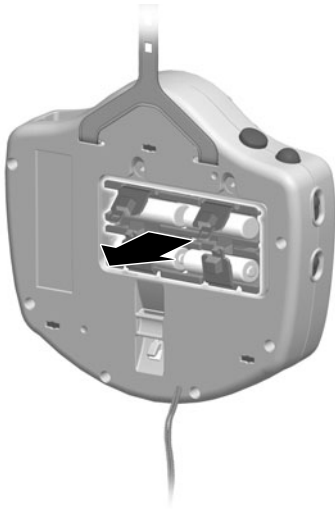
# Soother Battery Replacement

**Before First Time Use:** The soother includes four “AA” batteries in a disposable box for demonstration purposes only. Remove the disposable box with “AA” batteries and install four “C” (LR14) **alkaline** batteries.

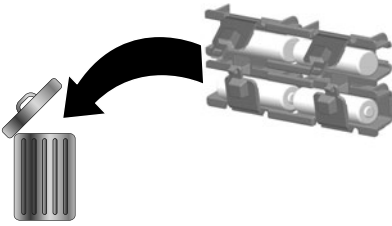


- Locate the battery compartment on the back of the soother.
- Loosen the screws in the battery compartment door and remove the door.

# Soother Battery Replacement



- Open the tabs on the disposable box and lift to remove it.



- Throw away the disposable box and the included “AA” batteries.
- Insert four, new “C” (LR14) **alkaline** batteries in the battery compartment.

**Hint:** We recommend **alkaline** batteries for longer battery life.

- Replace the battery compartment door and tighten the screws.
- If the soother begins to operate erratically, you may need to reset the electronics. Slide the power/volume switch off and then back on.

**Hint:** Under normal use conditions, the batteries in the soother will require replacement more often than the batteries in the remote. When sounds and lights from this soother become faint or stop, it's time for an adult to change the batteries.

# Remote Battery Installation



- Locate the battery compartment on the back of the remote.
- Loosen the screw in the battery compartment door and remove the door.
- Insert two, new “AAA” (LR03) **alkaline** batteries.

**Hint:** We recommend **alkaline** batteries for longer battery life.

- Replace the battery compartment door and tighten the screw.
- If the remote begins to operate erratically, you may need to reset the electronics. Remove the batteries and reinstall them.



**Great Britain:** Vanwall Business Park,  
Maidenhead SL6 4UB.

Helpline: 01628 500303.

[www.service.mattel.com/uk](http://www.service.mattel.com/uk).

Mattel Europa, B.V., Gondel 1, 1186 MJ  
Amstelveen, Nederland.

**Australia:** Mattel Australia Pty. Ltd.,  
658 Church Street, Locked Bag #870,  
Richmond, Victoria 3121 Australia.  
Consumer Advisory Service 1300 135 312.

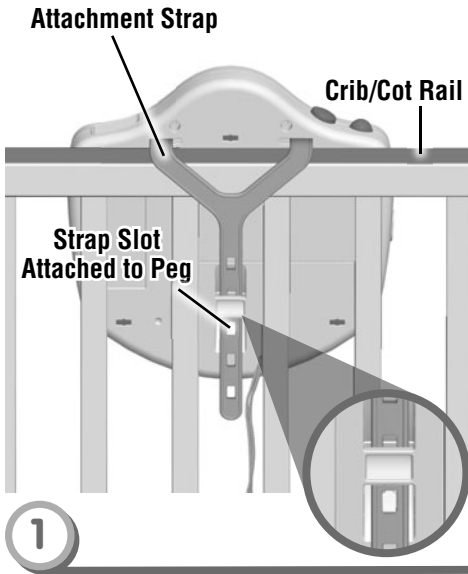
**New Zealand:** 16-18 William Pickering  
Drive, Albany 1331, Auckland.

**Asia:** Mattel East Asia Ltd, Room 1106,  
South Tower, World Finance Centre,  
Harbour City, Tsimshatsui, HK, China.

**Malaysia:** Diimport & Diedarkan Oleh:  
Mattel SEA Ptd Ltd. (993532-P) Lot 13.5,  
13th Floor, Menara Lien Hoe, Persiaran  
Tropicana Golf Country Resort, 47410 PJ.  
Tel: +603-3341 9052.

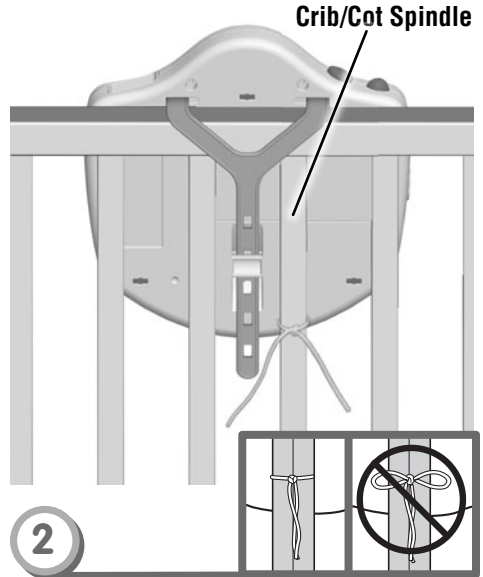
# Crib/Cot Attachment

**IMPORTANT!** Always attach all provided fasteners (strings, straps, clamps, etc.) tightly to a crib/cot or playpen according to the instructions. Do not add additional strings or straps to attach to a crib/cot. Check frequently.

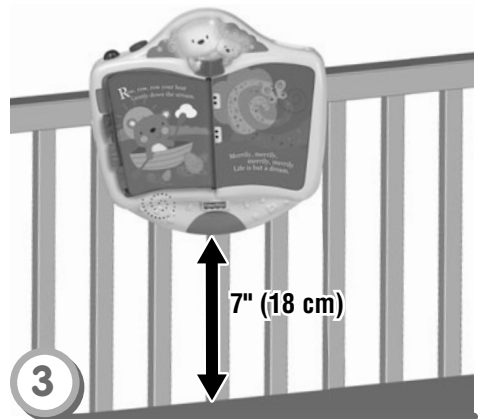


- Position the soother inside the crib/cot.
- Wrap the attachment strap around the top of the crib/cot rail.
- Slide the end of the attachment strap under the tab on the back of the soother.
- Fasten the attachment strap slot to the peg on the back of the soother.

**NOTE:** This soother should be snug against the crib/cot rail and spindles. Use the strap slot that provides the tightest fit.

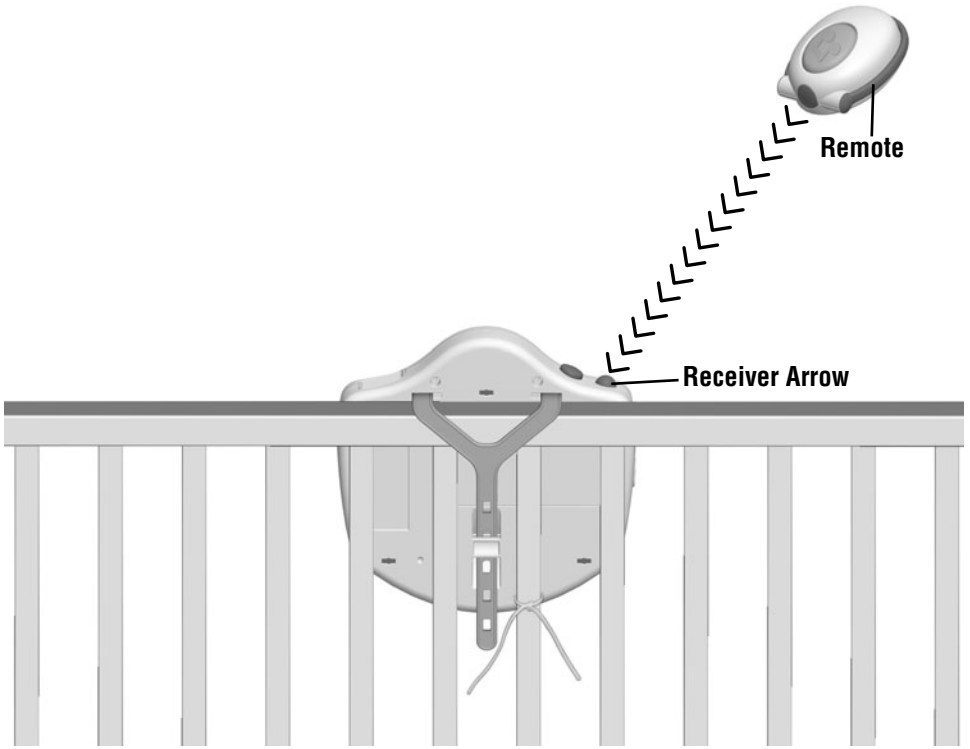


- Tie the soother strings to a crib/cot spindle. **NOTE:** It is better to tie the strings in a knot than a bow, since a bow may be easily untied.



- Make sure the distance between the bottom of the soother and the crib/cot mattress is **at least 7 inches (18 cm)**.
- If the distance is less than 7 inches (18 cm), readjust the attachment strap to lift the soother; or lower the crib/cot mattress.

# Remote Use

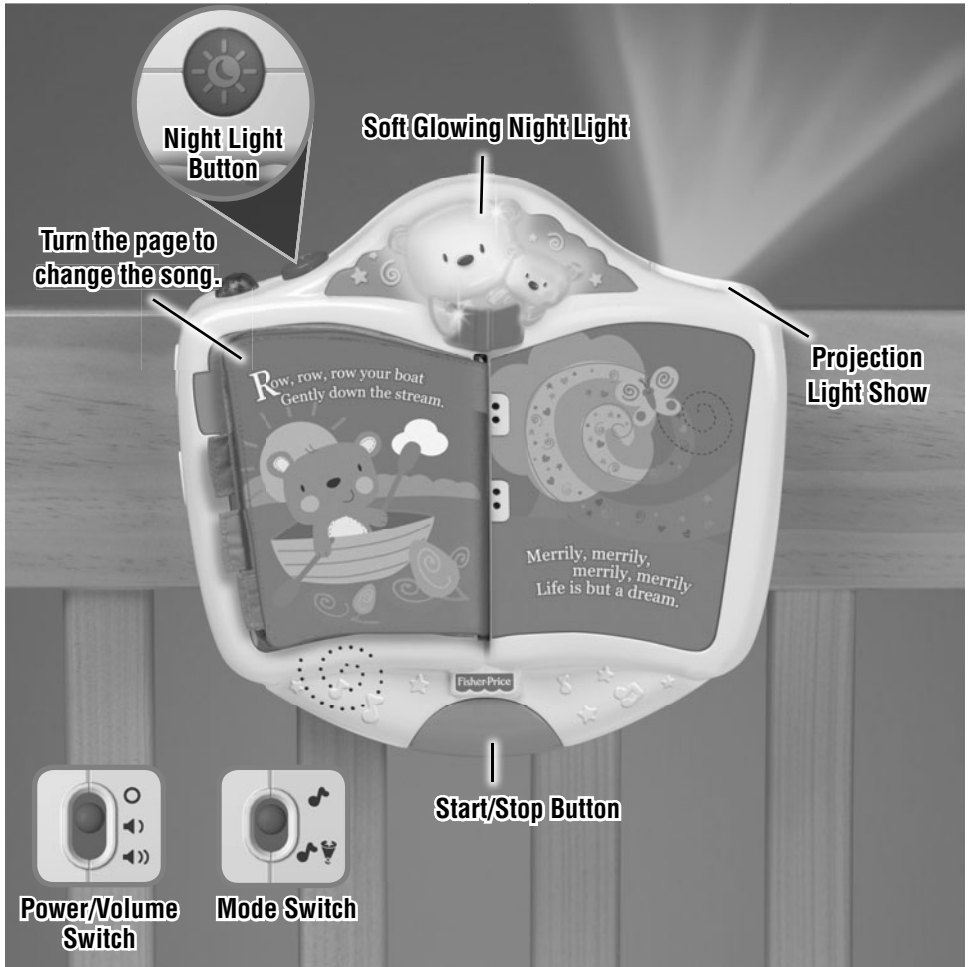


- Position the soother so that the receiver arrow points towards the area that the remote will be used. Make sure there is a clear path between the remote and the soother.
- Point the end of the remote toward the soother receiver and press the button.

## NOTES:

- In the unlikely event that use of the remote interferes with normal use of other remote controlled equipment, such as televisions and stereos, or use of other electronic or battery powered appliances interfere with operation of the soother, do not use both at the same time.
- You may notice a loss of range between the remote and the soother when using in bright light. For best performance, avoid using the remote in areas of bright light. Move the soother, or reduce the amount of light to improve performance.

# Stories in Song, Light Show & Night Light



- Slide the power/volume switch on the soother to ON with low volume ◀▶ or ON with high volume ◀▶▶.
- Slide the mode switch to: 🎵 **Music** or 🎵📺 **Music & Projection**.
  - 🎵 **Music** - plays approximately 20 minutes of music.
  - 🎵📺 **Music & Projection** - plays approximately 12 minutes of music and projects a charming light show on the ceiling.
- Press the start/stop button on the soother or the remote button to turn music/projection ON. Press the button again to stop music/projection.
- Turn the pages in the book to change the song.
- Press the 🌙 night light button on the soother for soft glowing light.  
**Hint:** *The night light turns OFF after approximately two minutes.*
- When you are finished using this product, slide the power/volume switch OFF ○.

## Care

- Wipe this toy with a clean cloth dampened with a mild soap and water solution. Do not immerse.
- This toy has no consumer serviceable parts. Do not take this toy apart.
- Protect the environment by not disposing of this product with household waste (2002/96/EC). Check your local authority for recycling advice and facilities.



## Battery Safety Information

**In exceptional circumstances, batteries may leak fluids that can cause a chemical burn injury or ruin your product. To avoid battery leakage:**

- Do not mix old and new batteries or batteries of different types: alkaline, standard (carbon-zinc) or rechargeable (nickel-cadmium).
- Insert batteries as indicated inside the battery compartment.
- Remove batteries during long periods of non-use. Always remove exhausted batteries from the product. Dispose of batteries safely. Do not dispose of this product in a fire. The batteries inside may explode or leak.
- Never short-circuit the battery terminals.
- Use only batteries of the same or equivalent type, as recommended.
- Do not charge non-rechargeable batteries.
- Remove rechargeable batteries from the product before charging.
- If removable, rechargeable batteries are used, they are only to be charged under adult supervision.