

Fisher-Price®

**G2809
Instructions**

Learning Home™

www.fisher-price.com

Please keep this instruction sheet for future reference, as it contains important information.

Requires three LR14 ("C") alkaline batteries (not included).

Adult assembly is required.

Tool required for assembly:
Phillips screwdriver (not included).



Laugh & Learn™



Parts

CAUTION

This product contains small parts in its unassembled state. Adult assembly is required.



Base Center (with Door Mat)



Base End (with Roller)



Wall (with Flowerpot)



Wall (with Mailbox)



Base End (with Book)



2 Rainspout Halves



Shaper Sorter Half (plain)



Door



House Number Assembly



Clock



Shaper Sorter Half (with Shapes)



3 Pieces of Mail



Handle Half



Handle Half (with 3 Holes)

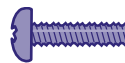


Door Knob (with Hole)



Door Knob

Parts Not Shown
4 Shape Sorter Blocks
3 Balls
Label Sheet



#6 x 1.3 cm (1/2") Screw (Black) – 6



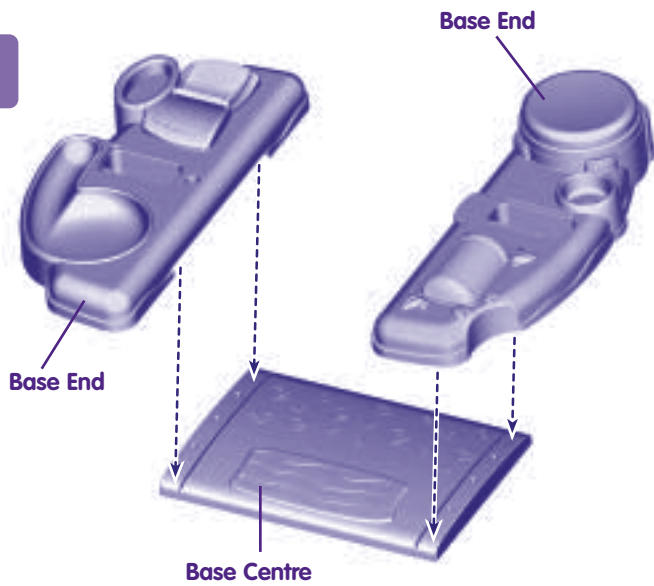
#6 x 2 cm (3/4") Screw – 32

Fasteners Shown Actual Size

Note: Tighten or loosen all screws with a Phillips screwdriver. Do not over-tighten the screws.

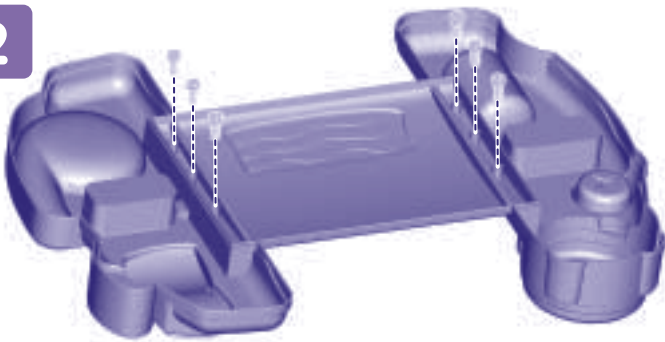
Assembly

1



- Fit the base centre (with mat) onto both base ends, as shown.

2

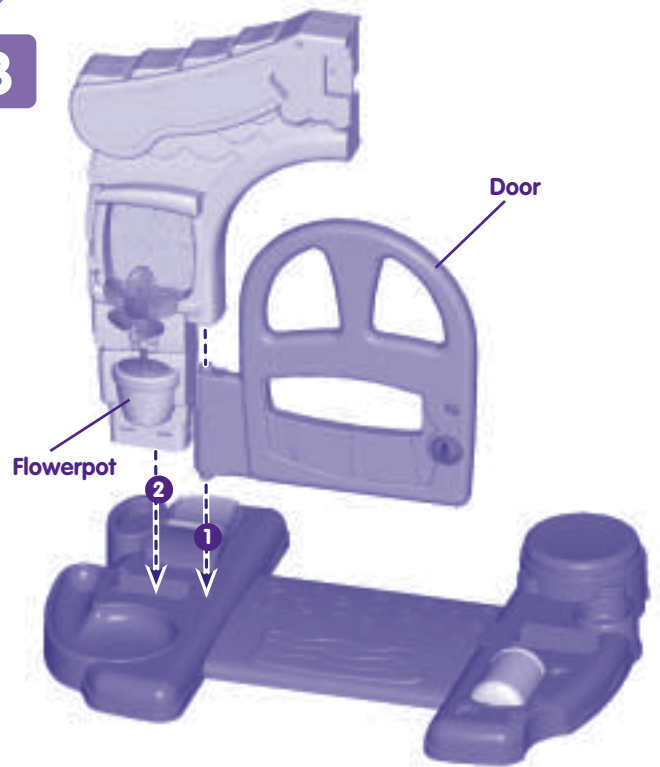


#6 x 2 cm (3/4") Screw

Bottom View

- Turn the base assembly over and insert six #6 x 2 cm (3/4") screws through the base and into the base ends. Tighten the screws.
- Turn the base assembly over.

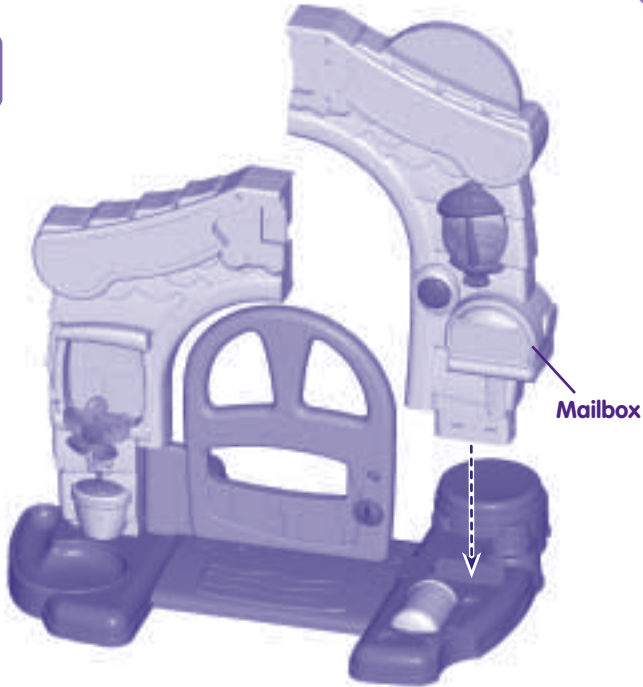
3



- Fit the peg on the bottom of the door into the small hole in the base assembly 1.
- While holding the door in place, fit the wall with the flowerpot into the base assembly, as shown 2.

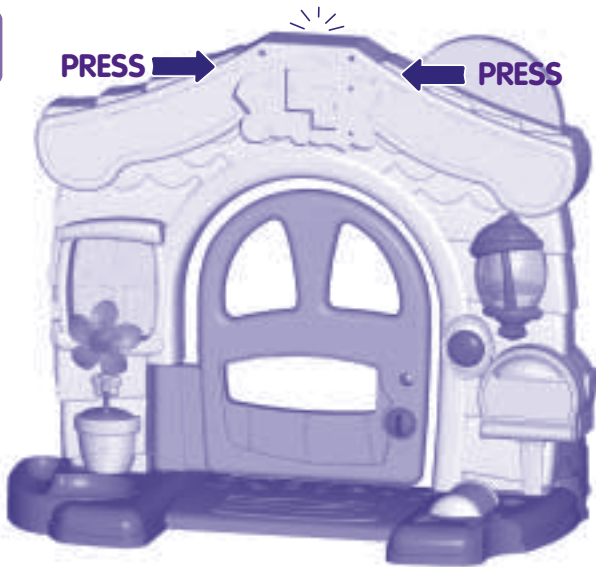
Assembly

4



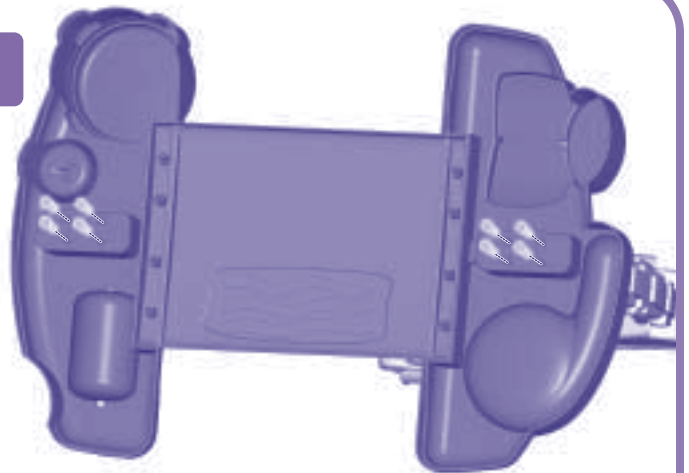
- Insert the wall with the mailbox into the base assembly.

5




- Press both walls firmly toward the centre, to "snap" them together.

6

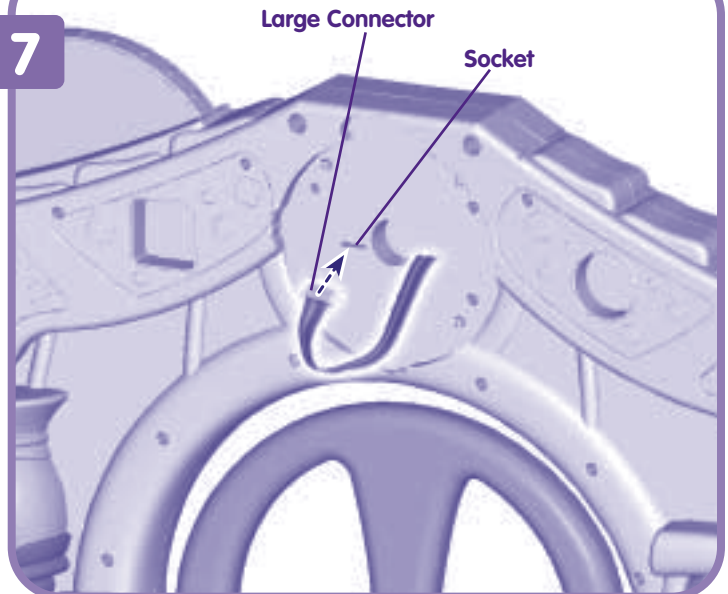


Bottom View

 #6 x 2 cm (3/4") Screw

- Lay the house assembly down so the bottom is facing you.
- Insert four #6 x 2 cm (3/4") screws into each base end to secure the walls. Tighten the screws.
- IMPORTANT: Please be sure these eight screws are fully tightened.**
- Turn the house assembly upright.

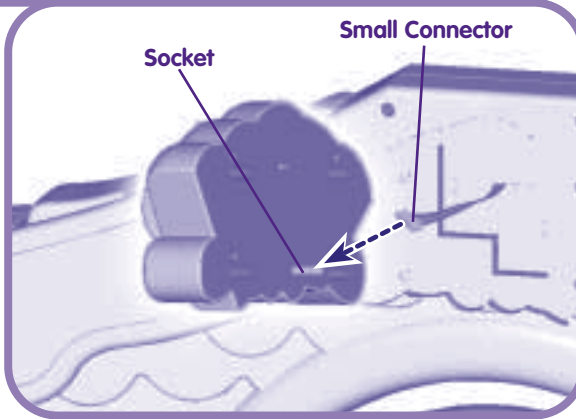
7



- Position the house assembly so that the side with the radio is facing you.
- Locate the large connector near the top.
- Insert and "snap" the large connector into the socket, as shown.

Assembly

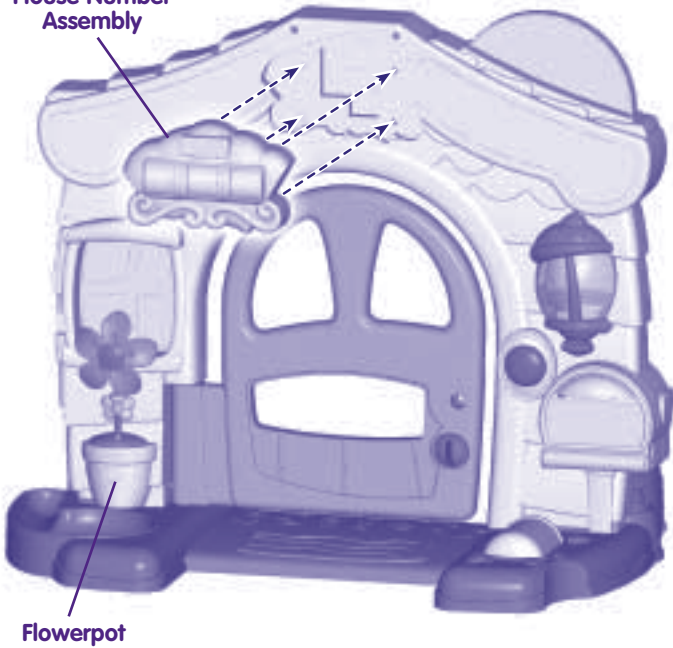
8



Socket

Small Connector

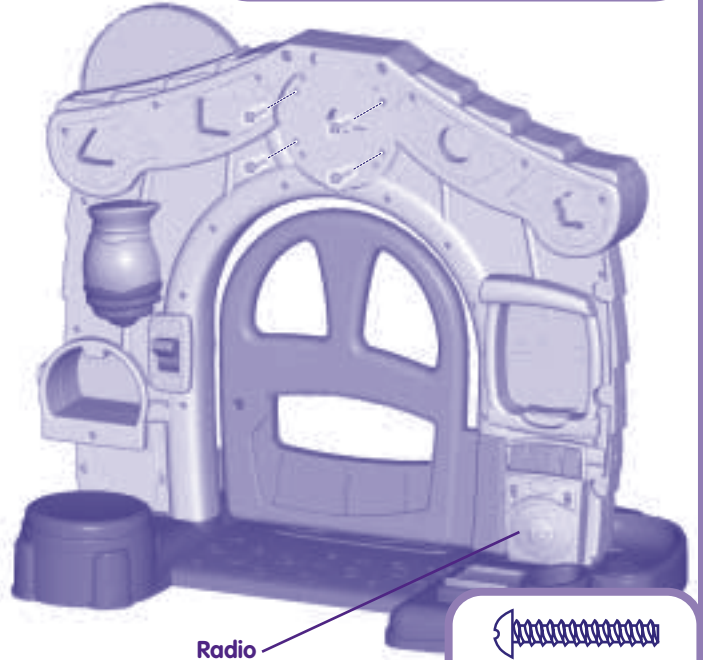
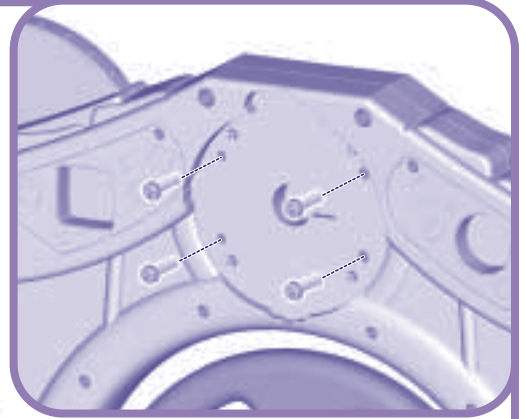
House Number Assembly



Flowerpot

- Turn the house around so that the side with the flowerpot is facing you.
- Locate the small connector near the top of the house.
- Insert and **"snap"** the small connector into the socket, as shown.
- Fit the house number assembly into the opening near the top of the house.

9



Radio

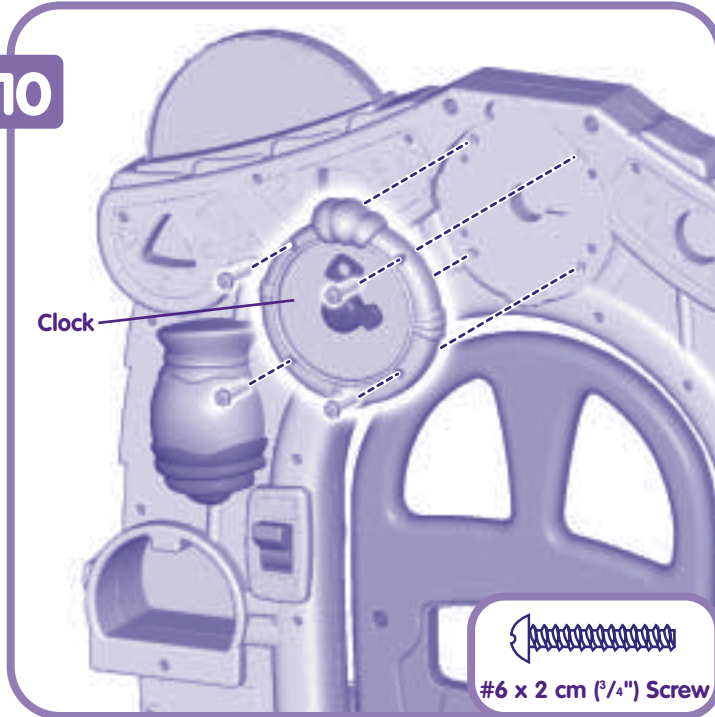


#6 x 2 cm (3/4") Screw

- Turn the house around so that the side with the radio is facing you.
- Insert four #6 x 2 cm (3/4") screws into the four holes above the door. Tighten the screws to secure the house number assembly.

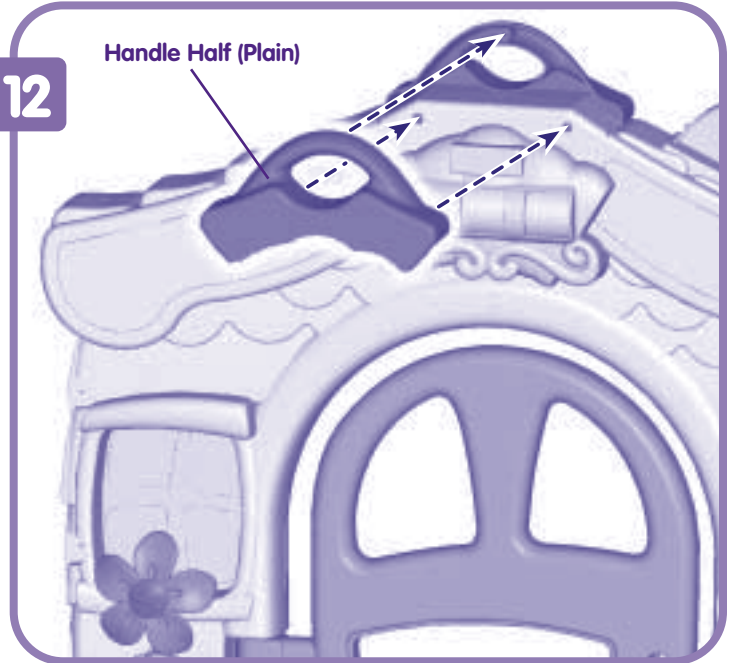
Assembly

10



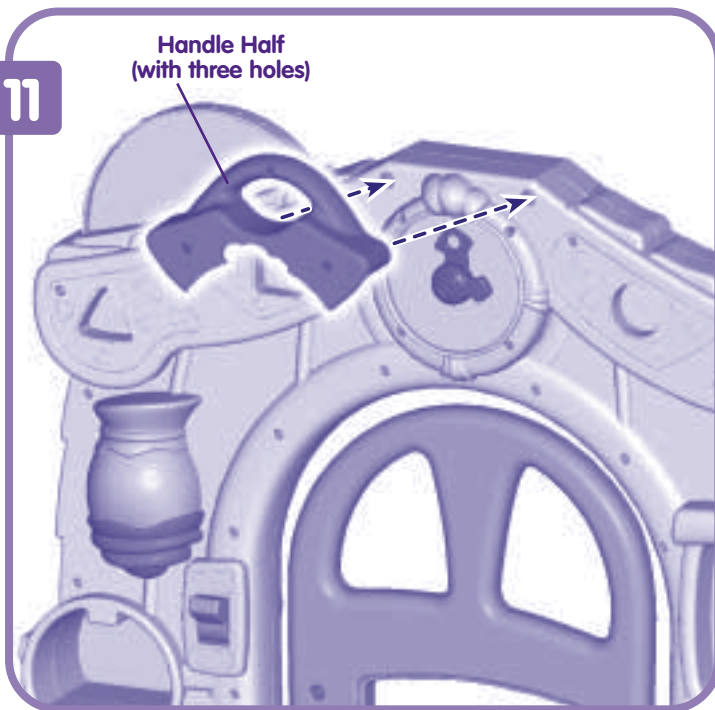
- Fit the clock into the round opening near the top of the house.
- Insert four #6 x 2 cm (3/4") screws into the four holes in the clock. Tighten the screws.

12



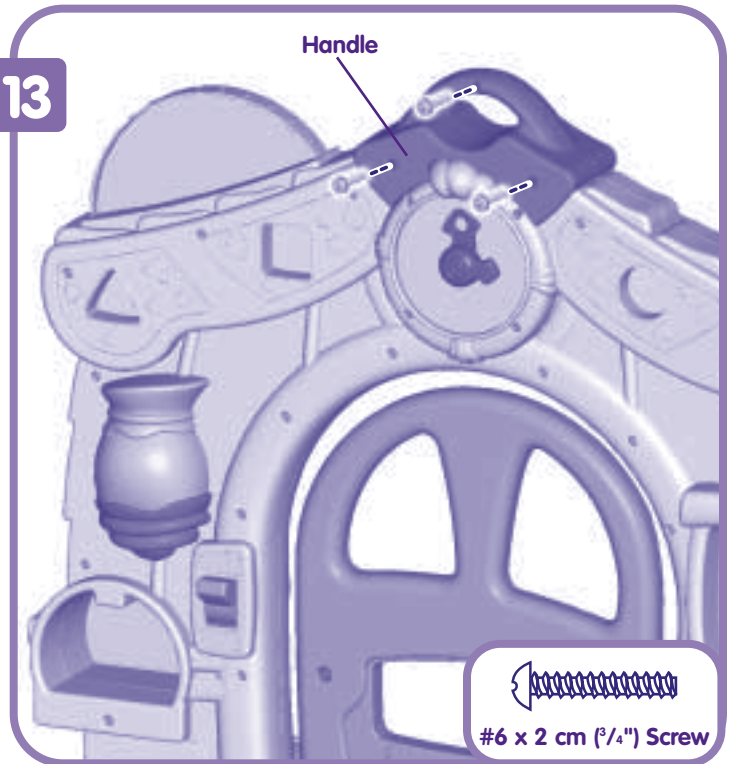
- Turn the house around.
- Fit the other handle half into the house above the house numbers.

11



- Locate the handle half with three holes.
- Fit the handle half into the house above the clock.

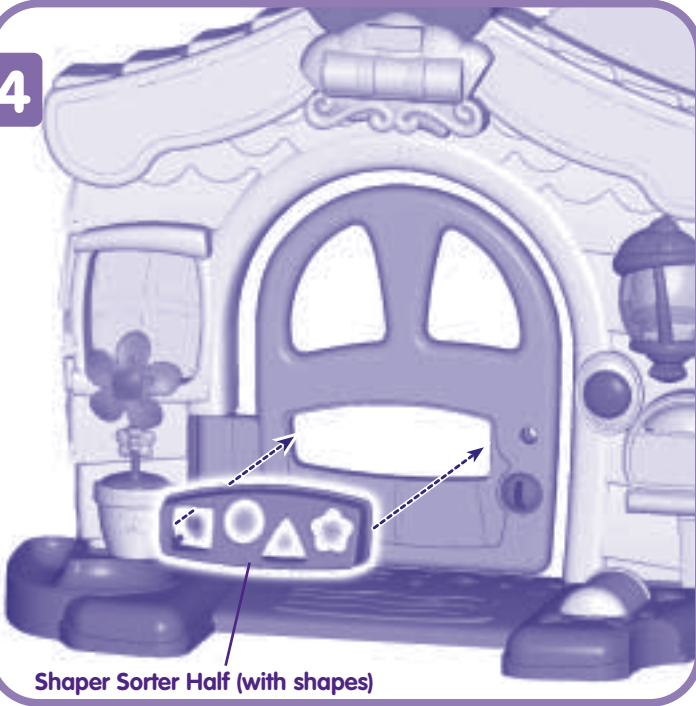
13



- Turn the house around.
- Insert three #6 x 2 cm (3/4") screws into the handle and tighten the screws.

Assembly

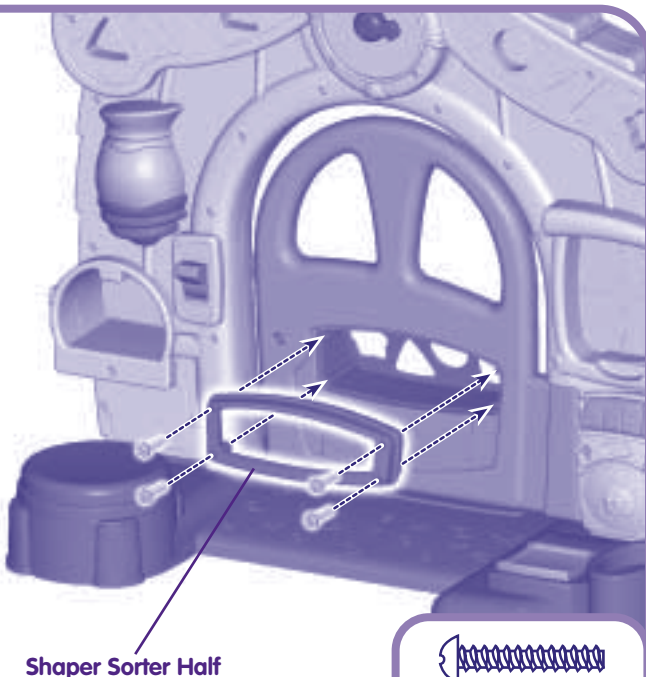
14



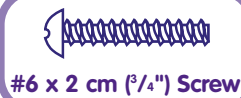
Shaper Sorter Half (with shapes)

- Position the house with the house numbers facing you.
- Fit the shape sorter half with the shapes into the opening in the door.

15



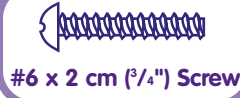
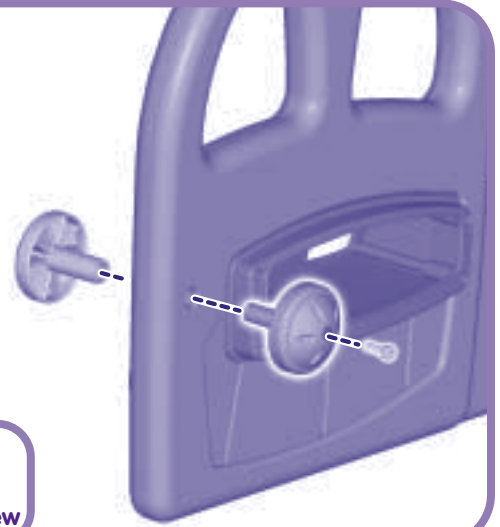
Shaper Sorter Half



#6 x 2 cm (3/4") Screw

- Turn the house around.
- Fit the other shape sorter half into the opening on the other side of the door.
- Insert four #6 x 2 cm (3/4") screws into the shape sorter and tighten the screws.

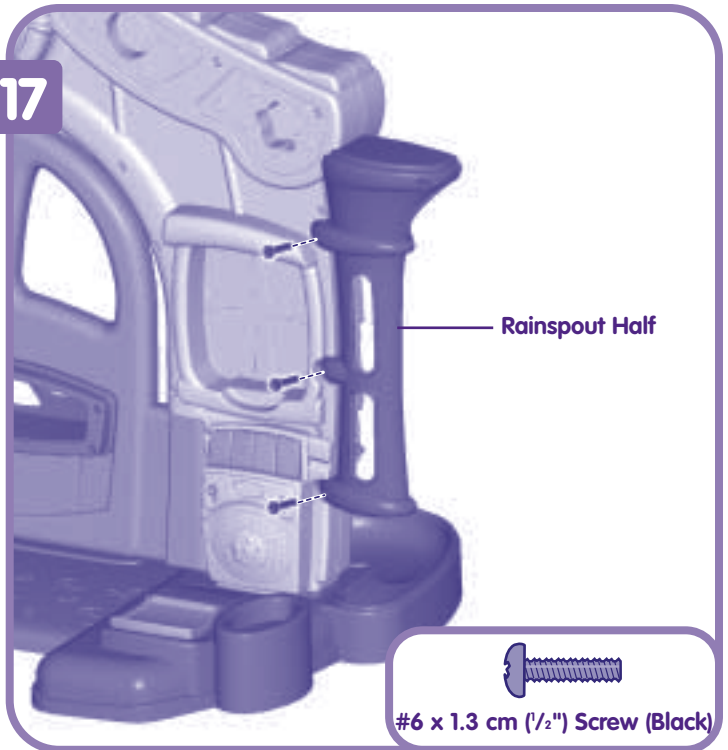
16



#6 x 2 cm (3/4") Screw

- Insert the doorknob with the hole into the hole in the back of the door.
- Insert the other doorknob into the matching hole on the front of the door.
- Insert a #6 x 2 cm (3/4") screw into the doorknob and tighten the screw.

17



Rainspout Half

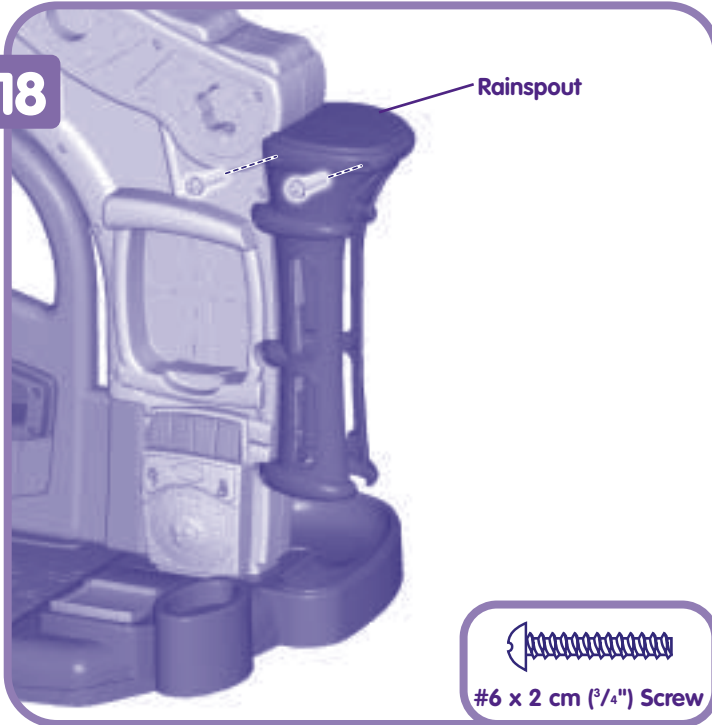


#6 x 1.3 cm (1/2") Screw (Black)

- Position a rainspout half with the wide end facing up. Fit it to the side of the house near the window.
- While holding the rainspout half in position, insert three, black #6 x 1.3 cm (1/2") screws into the rainspout half. Tighten the screws.

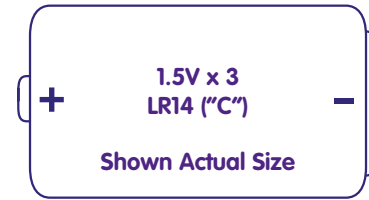
Assembly

18



- Attach the other rainspout half to the front of the house.
- Insert two #6 x 2 cm (3/4") screws into the holes near the top of the rainspout assembly. Tighten the screws to secure the rainspout halves.

Battery Installation



- Locate the battery compartment below the mailbox.
- Loosen the screws in the battery compartment door. Remove the battery compartment door.
- Insert three LR14 ("C") **alkaline** batteries, as indicated inside the battery compartment.

Hint: We recommend using alkaline batteries for longer life.

- Replace the battery compartment door and tighten the screws.
- When lights or sounds from this toy become faint or stop, it's time for an adult to change the batteries!

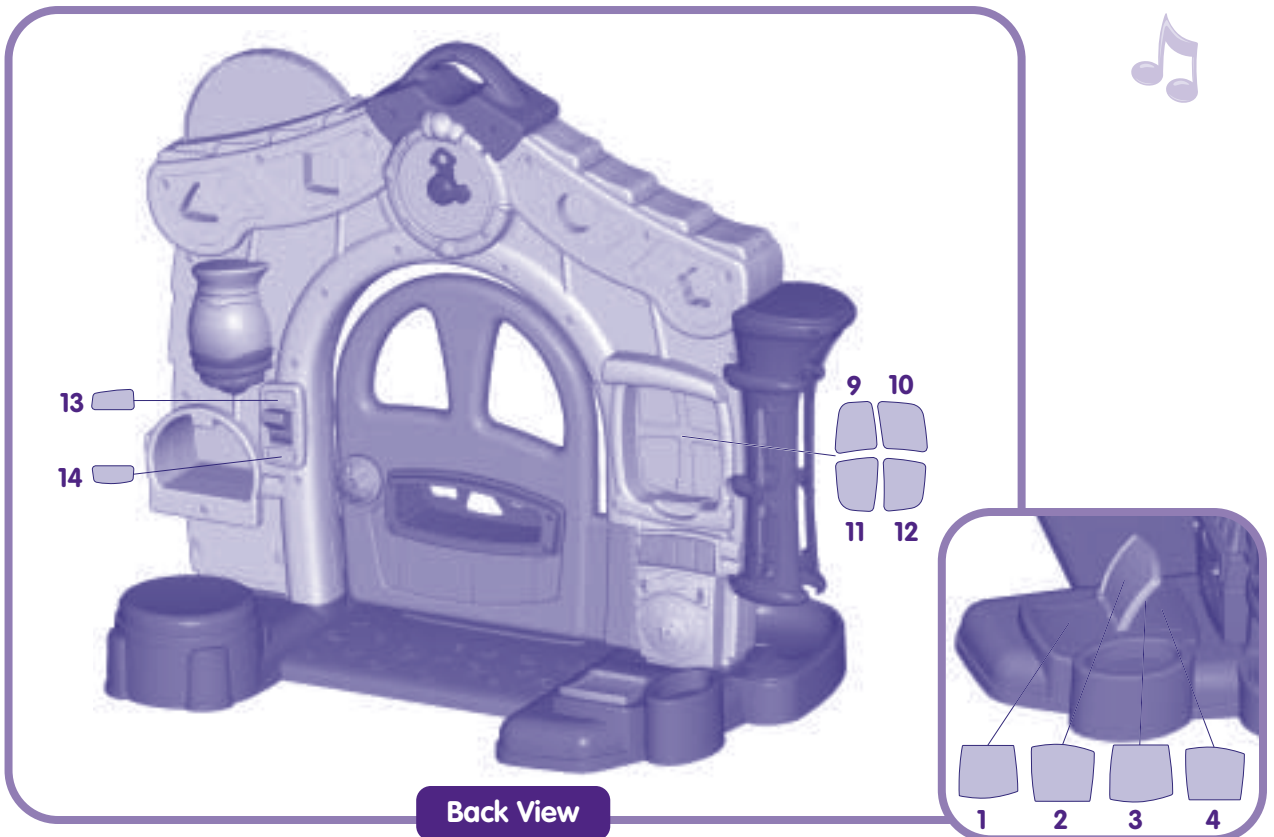
Battery Safety Information

Batteries may leak fluids that can cause a chemical burn injury or ruin your toy. To avoid battery leakage:

- Do not mix old and new batteries or batteries of different types: alkaline, standard (carbon-zinc) or rechargeable (nickel-cadmium).
- Insert batteries as indicated inside the battery compartment.
- Remove batteries during long periods of non-use. Always remove exhausted batteries from the toy. Dispose of batteries safely. Do not dispose of batteries in a fire. The batteries may explode or leak.
- Never short-circuit the battery terminals.
- Use only batteries of the same or equivalent type, as recommended.
- Do not charge non-rechargeable batteries.
- Remove rechargeable batteries from the toy before charging.
- If removable, rechargeable batteries are used, they are only to be charged under adult supervision.

Label Decorations

- Apply the labels as shown in the illustrations.
- For best results, wash your hands before applying the labels and make sure the areas to which the labels will be applied are clean and dry. Avoid repositioning a label once it has been applied.



2 interactive play modes

Learning time

Music fun

ABC



Turn House Numbers

Turn the house numbers	ABC Hear the number you chose Hear chimes count out that number
Drop a ball down the rainspout	ABC Hear the balls counted as you drop each one followed by a fun tune Hear the <i>Itsy-Bitsy-Spider</i> song or a fun sound effect
Open and close the window	ABC Learn up and down Hear sounds from "outside" the window or a fun song
Open the door	ABC Learn <i>open, closed, hello and goodbye</i> Hear one of several songs – close the door and the music stops
Press the doorbell	ABC Hear chimes and a warm greeting as the house light turns on Hear chimes and a short ditty as the house light turns on
Open the postbox	ABC Learn about posting mail, <i>open, closed</i> or hear the A-B-C song Hear the A-B-C song
Flip the light switch	ABC Learn about <i>on</i> and <i>off</i> as the house light turns on and off Turn the house light on and hear a fun tune
Spin the sun and moon dial	ABC Learn about nighttime and daytime with fun sound effects Hear a daytime or nighttime song
Turn the clock hands	ABC Hear a fun counting song or hear <i>tick tocks</i> Hear <i>Hickory Dickory Dock</i> or other fun clock sounds
Press the ABC radio button	ABC Hear the A-B-C song Hear one of several fun songs
Press the 1-2-3 radio button	ABC Hear a fun counting song Hear any of several enjoyable tunes
Press the rainbow radio button	ABC Hear a learning song about colors and shapes Hear one of several fun songs
Press the opposites radio button	ABC Hear a learning song about opposites Hear any of several enjoyable tunes



Open D



MODE SWITCH

- Locate the mode switch on the "radio."
- Slide the mode switch to either learning mode **ABC**, music mode or off .
- When your child is finished playing with this toy, slide the mode switch to the off position.

IMPORTANT! Low battery power may result in irregular sound/lights and sounds. Replace all batteries with alkaline.



Door

Press Doorbell



Open Postbox

Turn Dial

Turn Hands

Drop Balls Down Rainspout

Flip Switch

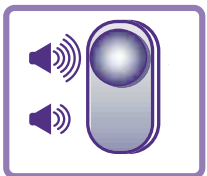


Open and Close Window



Press Radio Buttons

Mode Button

Volume Button



VOLUME SWITCH

- Locate the volume switch on the "radio."
- Adjust volume to high  or low , for your child's comfort.

may affect toy function,
and the toy may not turn off.
batteries only.



Consumer Information

Care

- Wipe this toy with a clean cloth dampened with a mild soap and water solution. Do not immerse this toy.
- This toy has no consumer serviceable parts. Do not take this toy apart.

Questions? We'd like to hear from you!

Mattel UK Ltd, Vanwall Business Park, Maidenhead SL6 4UB. Helpline: 01628 500302.

AUSTRALIA Mattel Australia Pty. Ltd., 658 Church Street, Locked Bag #870, Richmond, Victoria 3121 Australia. Consumer Advisory Service 1300 135 312.

NEW ZEALAND 16-18 William Pickering Drive, Albany 1331, Auckland.

ASIA Mattel East Asia Ltd, Room 1106, South Tower, World Finance Centre, Harbour City, Tsimshatsui, HK, China.



Learn each day— through fun, familiar play!

Our Laugh & Learn™ toys build upon babies' innate curiosity and the natural way they learn through everyday experiences. Whether baby is pressing the doorbell or dropping balls down the rainspout, the Laugh & Learn™ Learning Home™ provides baby with the opportunity to imitate mum and dad, to learn about objects, numbers, letters, colours, shapes and more!

Laugh & Learn™ Learning Home™ has two interactive modes of play – learning time and musical fun. Just slide the switch for a whole new way to play. And baby will feel right at home with learning since both sides of the home are loaded with activities, music, speech and sounds!



Learning Table™
G2808



Look for other Laugh & Learn toys ...



Learning Phone™
G2811



Learning Birdbath™
G2807



Learning Puppy™
G2810